

509

Organo

Andante

Handwritten musical notation for the first system, including staves for Organ and vocal parts. The lyrics are: "Domine Deus Deus sanctissime Deus".

Handwritten musical notation for the second system, including staves for Organ and vocal parts. The lyrics are: "Domine Deus Domine Deus Domine Deus".

Alto

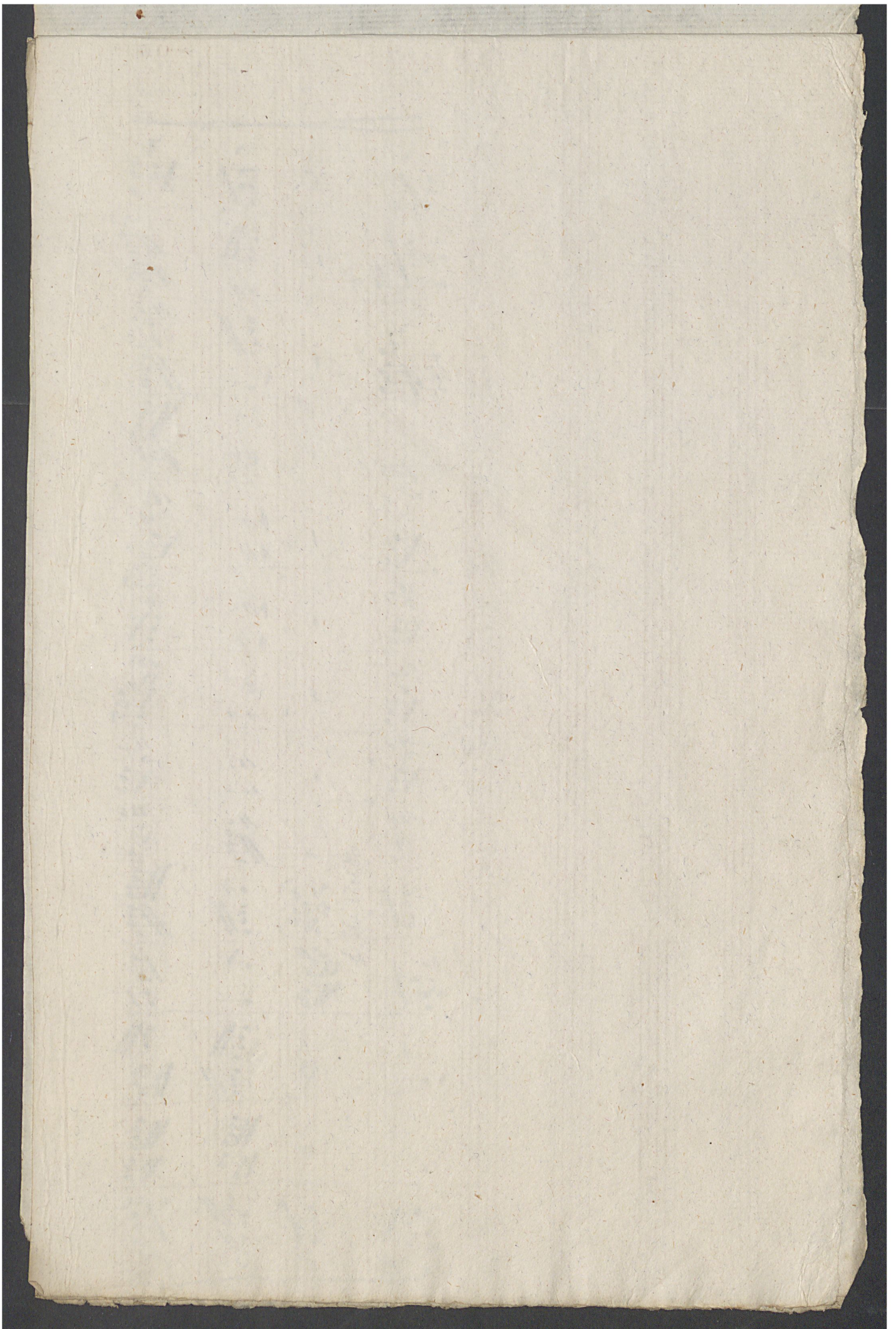
4668 # 5

302#6

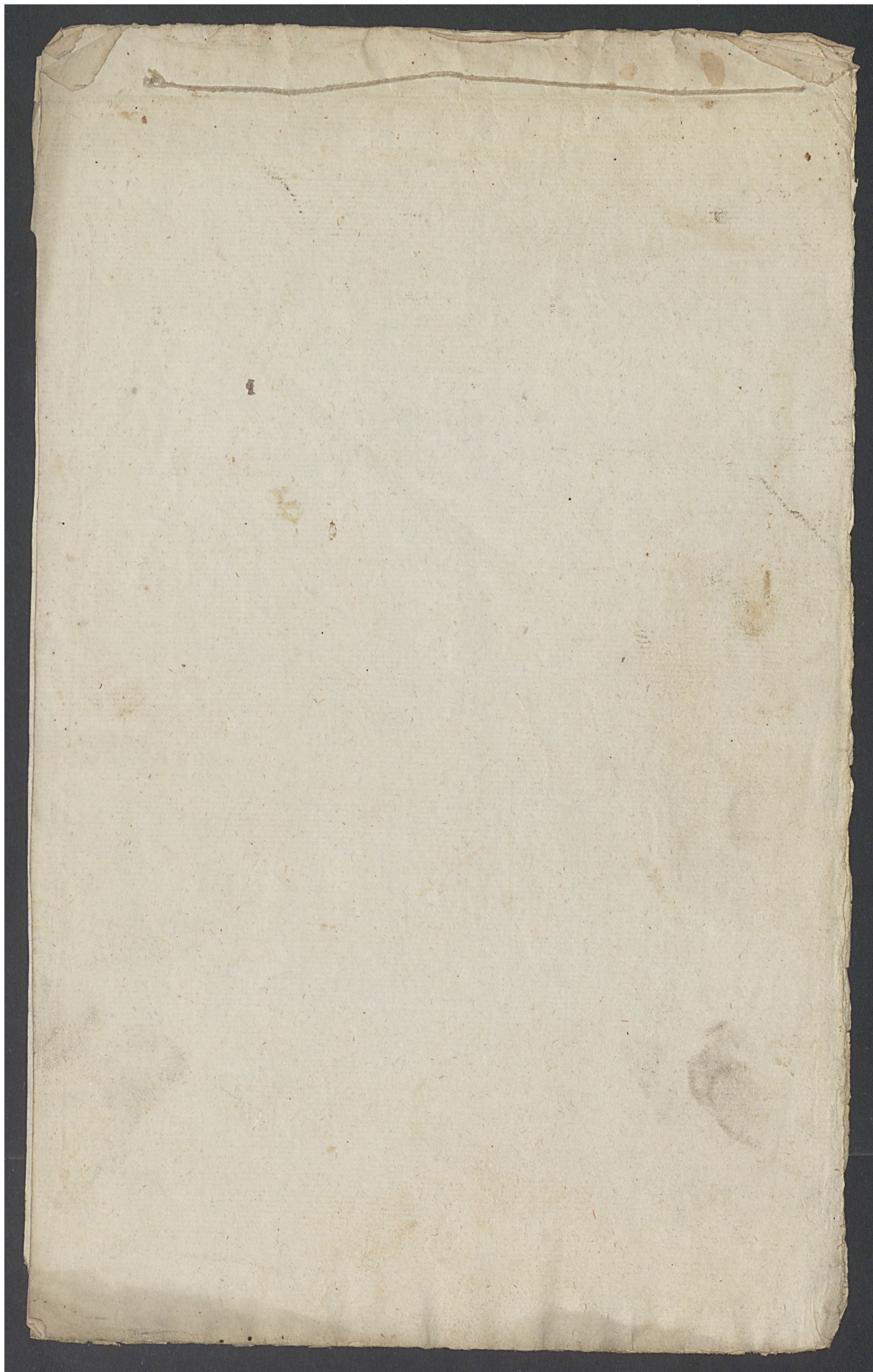
4 4

6

4



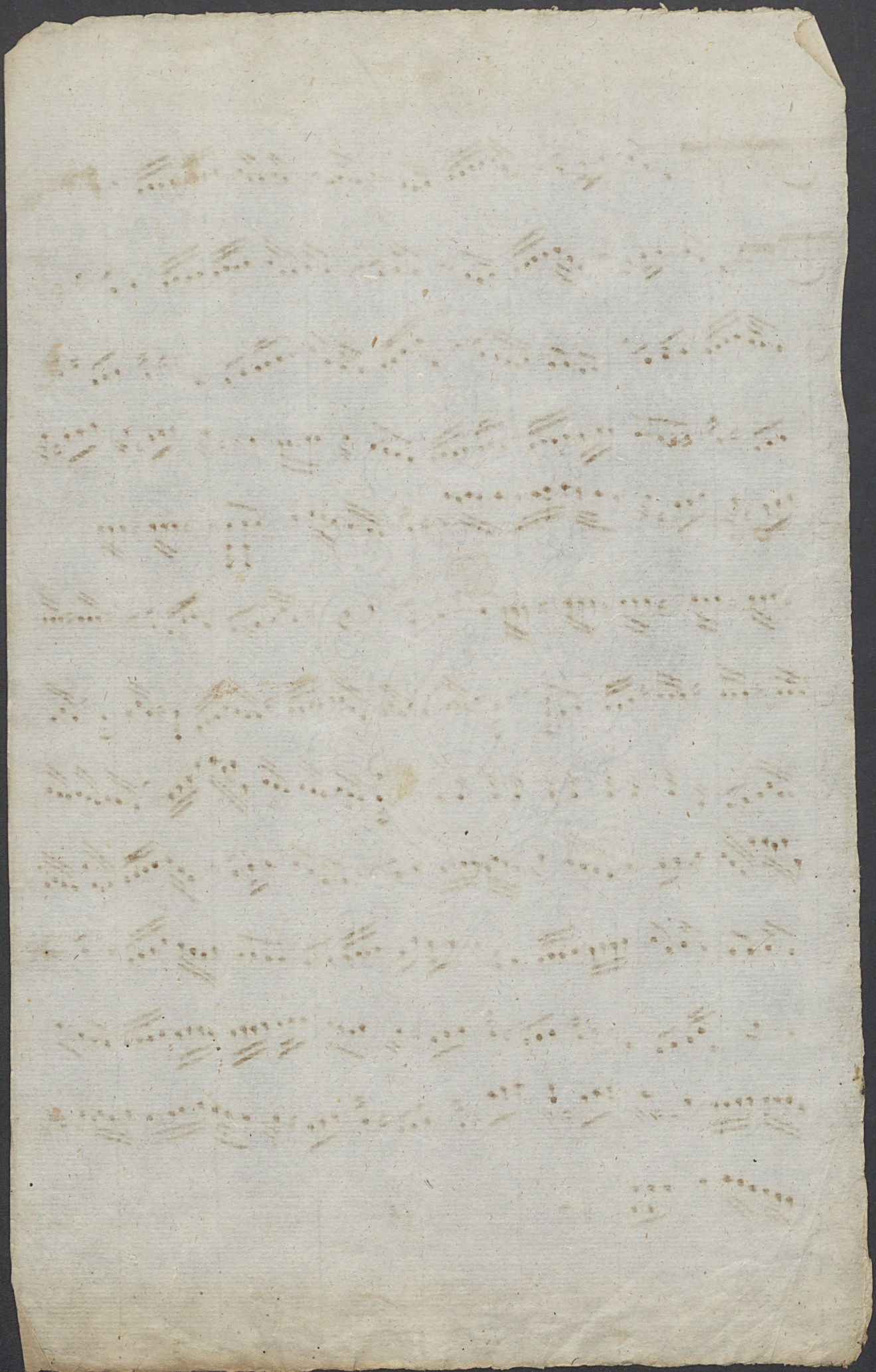
505



Andante.

Violino. 1.

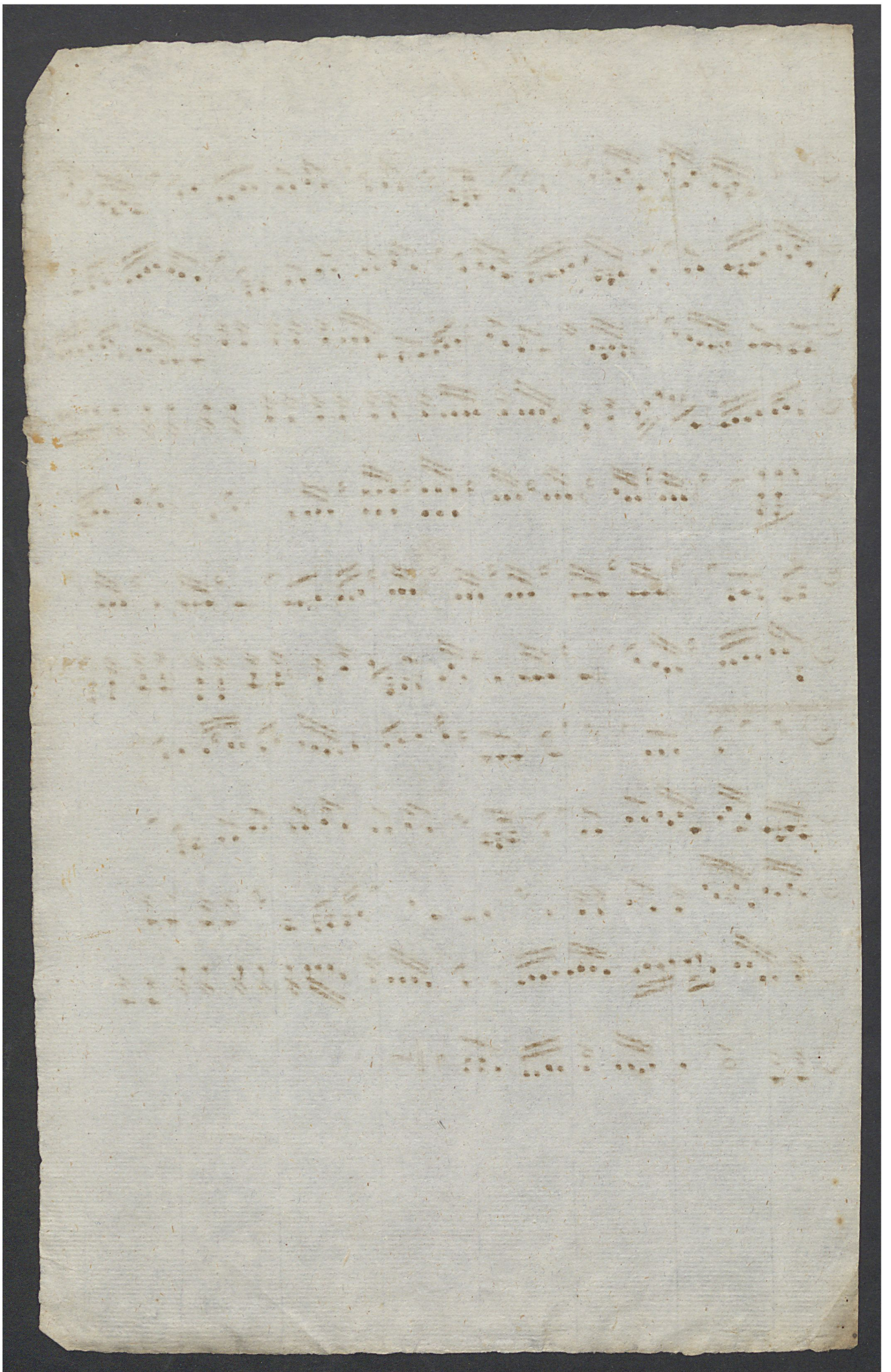
The image shows a page of handwritten musical notation for the first violin part of a piece. The tempo is marked 'Andante.' and the instrument is 'Violino. 1.'. The music is written on 13 staves. The key signature has one sharp (F#) and the time signature is 4/4. The notation includes a variety of rhythmic patterns, such as sixteenth and thirty-second notes, and rests. There are dynamic markings 'sp.' (pizzicato) and 'tr.' (trill) scattered throughout the score. The paper is aged and shows some staining.



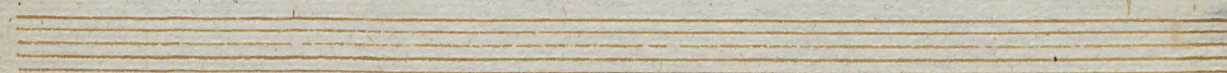
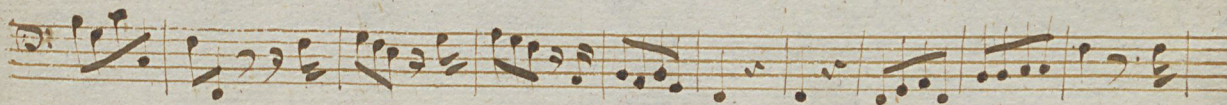
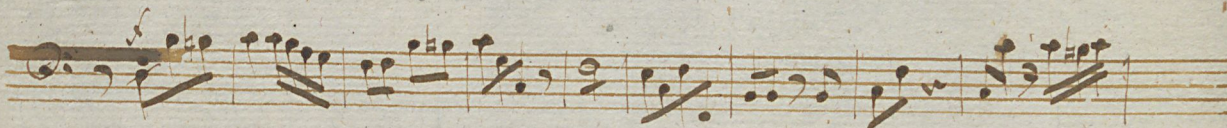
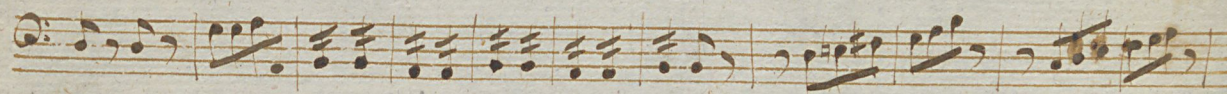
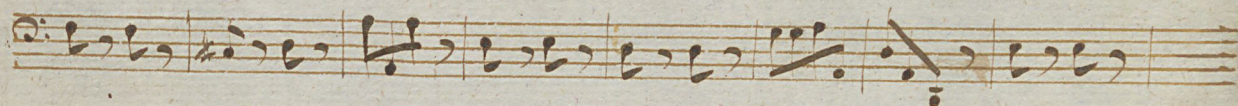
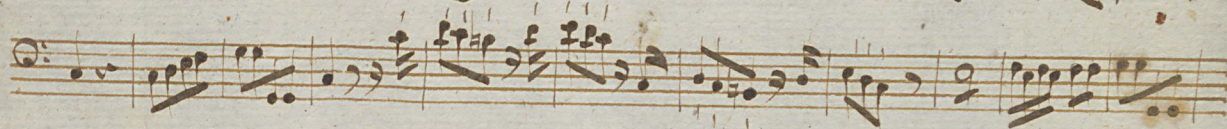
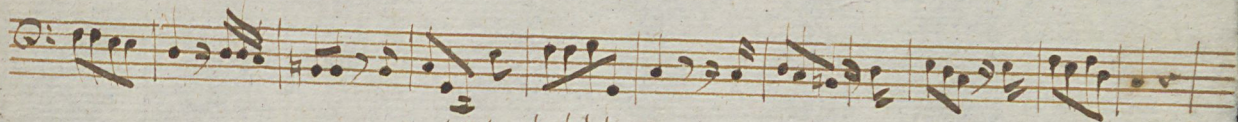
Andante.

Viol. II.

fp.



Basso.



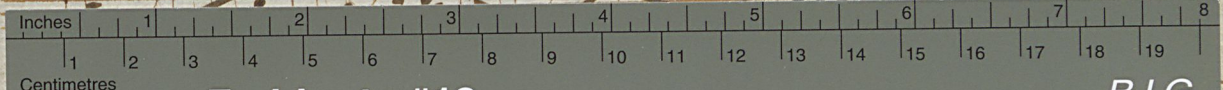
Handwritten musical notation on aged paper, consisting of approximately 12 staves. The notation is extremely faint and illegible, appearing as light brown or tan marks on the paper. The marks resemble musical notes, stems, and beams, but their specific details are lost due to fading and the age of the document. The paper shows signs of wear, including discoloration and some small stains.

Organo.

A handwritten musical score for organ, consisting of ten staves of music. The notation includes various notes, rests, and figured bass annotations (numbers 1-7) placed above or below the notes. The music is written in a single system across ten staves. The paper is aged and shows some staining. The score is written in a style typical of 17th or 18th-century manuscript notation.

Organo.

Handwritten musical score for organ, consisting of ten staves of music. The notation includes various notes, rests, and fingerings, typical of an organ piece. The paper shows signs of age and wear.



Farbkarte #13

B.I.G.

Blue	Cyan	Green	Yellow	Red	Magenta	White	3/Color	Black

