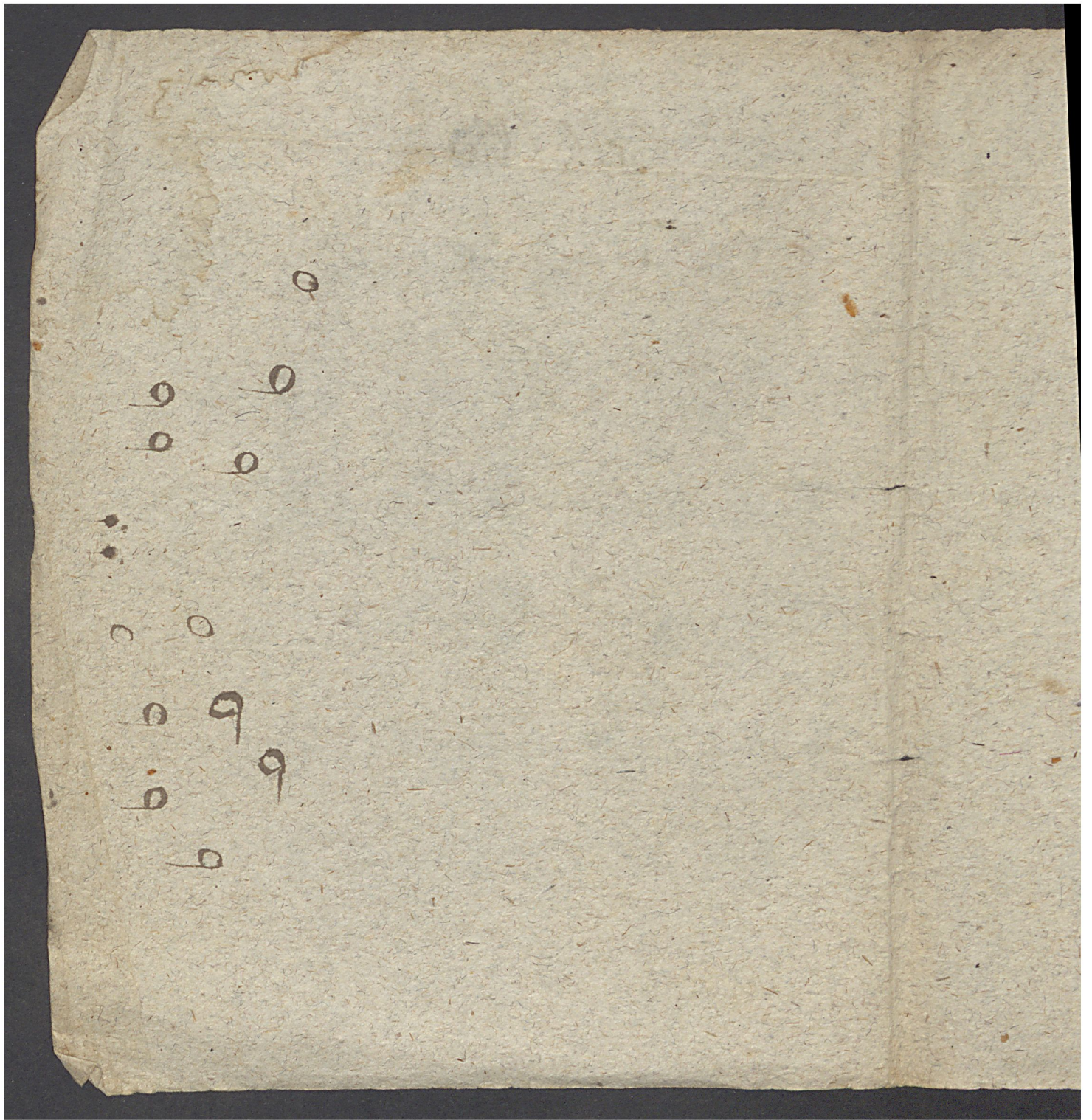


Herbstlied

Dir, Dir = In großer Gabe .p.
in H. Dreyfuss, Orgel,
2. Violin, Viola u. Bass
Fiedeln und Posaunen.

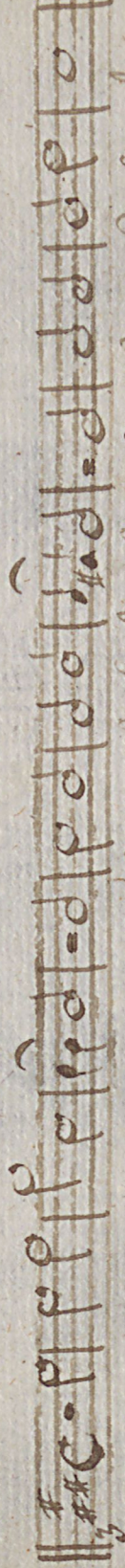
456



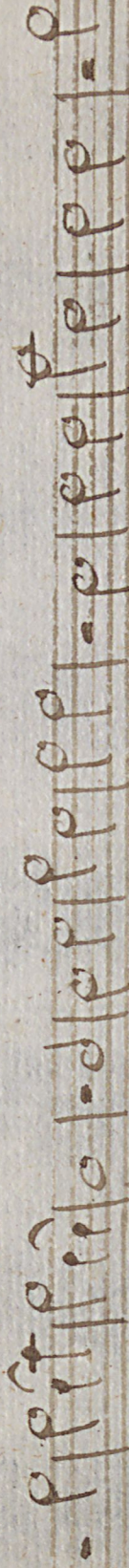
Nicht langsam

Canto. 2 do

Erbsflind.



V. 1. Dir, Du, Du quere Juben, Er-saltes u. tu lu-ben, Du lob u. Dank. Sprich,
 V. 2. Du bist mit mir treu, Die Treue kein lieb. mal neu, Du gibst die frohe Frucht,
 V. 3. Du bist mit treuen Tauen, Die bringe bracht Treue by, Die schenke. In Alt u. C,
 V. 4. In allem Dief uns pfan, In's allt Dief er-sich-1, voll unser Lorde's Trage.



1. Du lob u. Dank mit frois, Die Treue bracht Treue blühen, Die soll u. treue blühen, Die
 2. Du gibst die fro. die Frucht, Das kein, wie das grois, Die schenke. In Alt u. C, Die
 3. Die schenke. In Alt u. C, Die schenke. In Alt u. C, Die schenke. In Alt u. C, Die schenke. In Alt u. C,
 4. voll unser Lorde's Trage. In's allt Dief er-sich-1, voll unser Lorde's Trage, In's allt Dief er-sich-1, voll



4. uel.

macht'igst auf die Götter -
lichte al. bin, wer den
In dem die man
soll sich demselben

Faint, illegible handwritten text or bleed-through from the reverse side of the page.

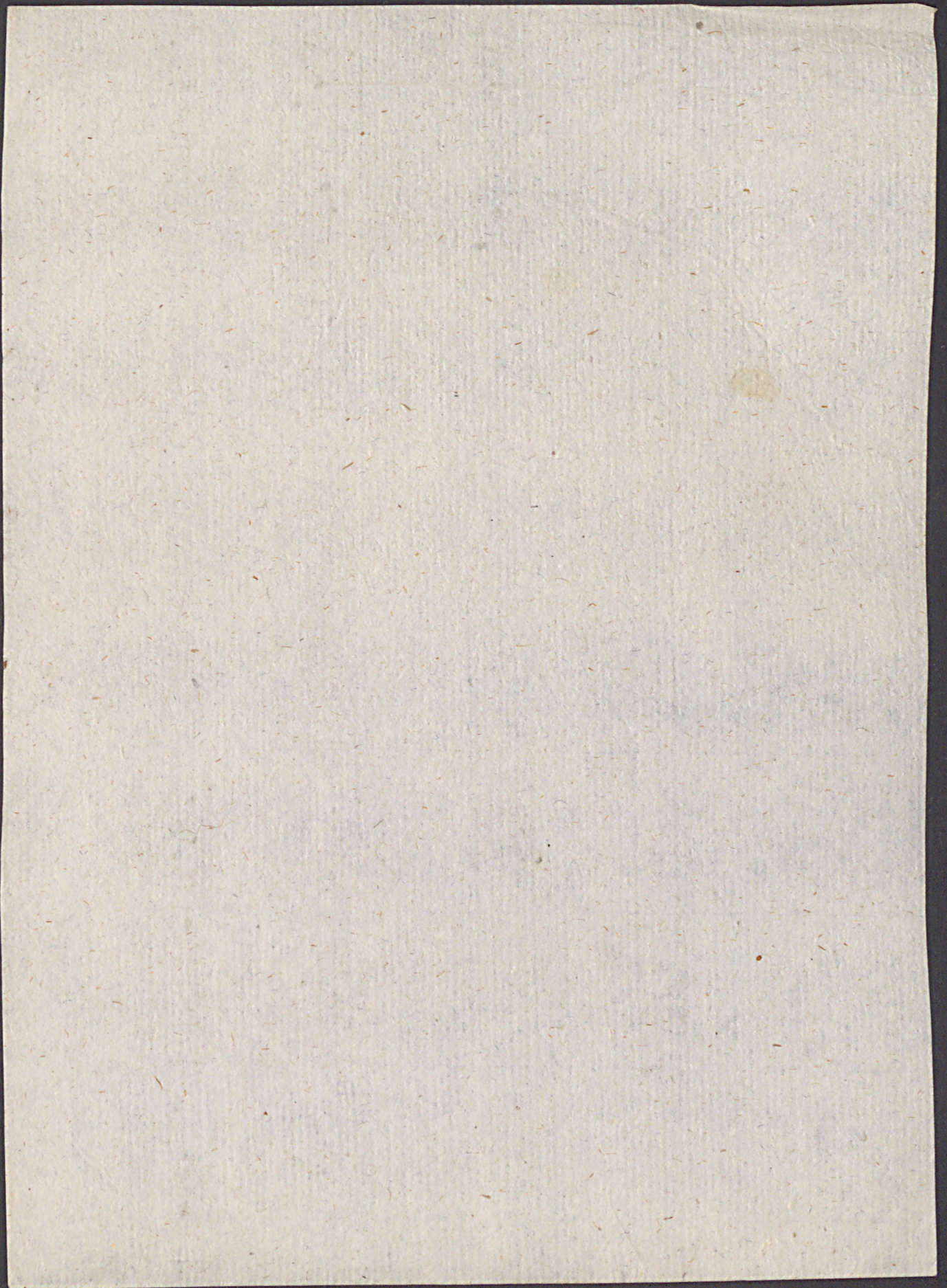
Soll - müßte - gar nicht sein du nicht, Soll müßte gar nicht sein du - nicht.
 Du bist al - lein die alle in der Welt, Du bist al - lein die al - lein in der Welt.
 Spruch die den Dänen Storm jaget,
 Man soll sich Dänen nicht in der Welt.

Night Lullaby

Tenor.

Forthlings





Nicht langsam

Basso.

Direktlinig.

A musical staff in G major (one sharp) and 2/4 time. It begins with a treble clef and a key signature of one sharp (F#). The notation consists of a sequence of quarter notes and rests, forming a simple rhythmic pattern.

1. Dir die die große Gabe, Erfalter nur belohnt, Dir lob 2. Dir und
2. Du bist die große Qual, Dir Gabe die liebe weihen, Du nicht die große
3. Du bist die große Liebe, Dir Gabe die große weihen, Du nicht die große
4. Du bist die große Liebe, Dir Gabe die große weihen, Du nicht die große

A musical staff in G major (one sharp) and 2/4 time. It begins with a treble clef and a key signature of one sharp (F#). The notation consists of a sequence of quarter notes and rests, forming a simple rhythmic pattern.

Dir die die große Gabe, Erfalter nur belohnt, Dir lob 2. Dir und
 Du bist die große Qual, Dir Gabe die liebe weihen, Du nicht die große
 Du bist die große Liebe, Dir Gabe die große weihen, Du nicht die große
 Du bist die große Liebe, Dir Gabe die große weihen, Du nicht die große



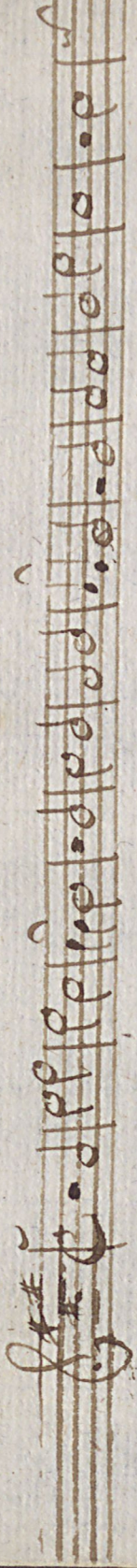
4. und

1. glückseligen, allmächtigsten und Dein Gefeß, allmächtigen und Dein Gefeß.
Fest, Du bist alldem, Du bist alldem, Du bist alldem, Du bist alldem,
Erwählter, denn Du bist alldem, Du bist alldem, Du bist alldem, Du bist alldem,
Gefunden, denn Du bist alldem, Du bist alldem, Du bist alldem, Du bist alldem,

Wigl Langsam

Violino I^{mo}

Georg Lind.



Handwritten text, likely bleed-through from the reverse side of the page. The text is faint and difficult to decipher but appears to be organized into several vertical columns. Some legible fragments include:

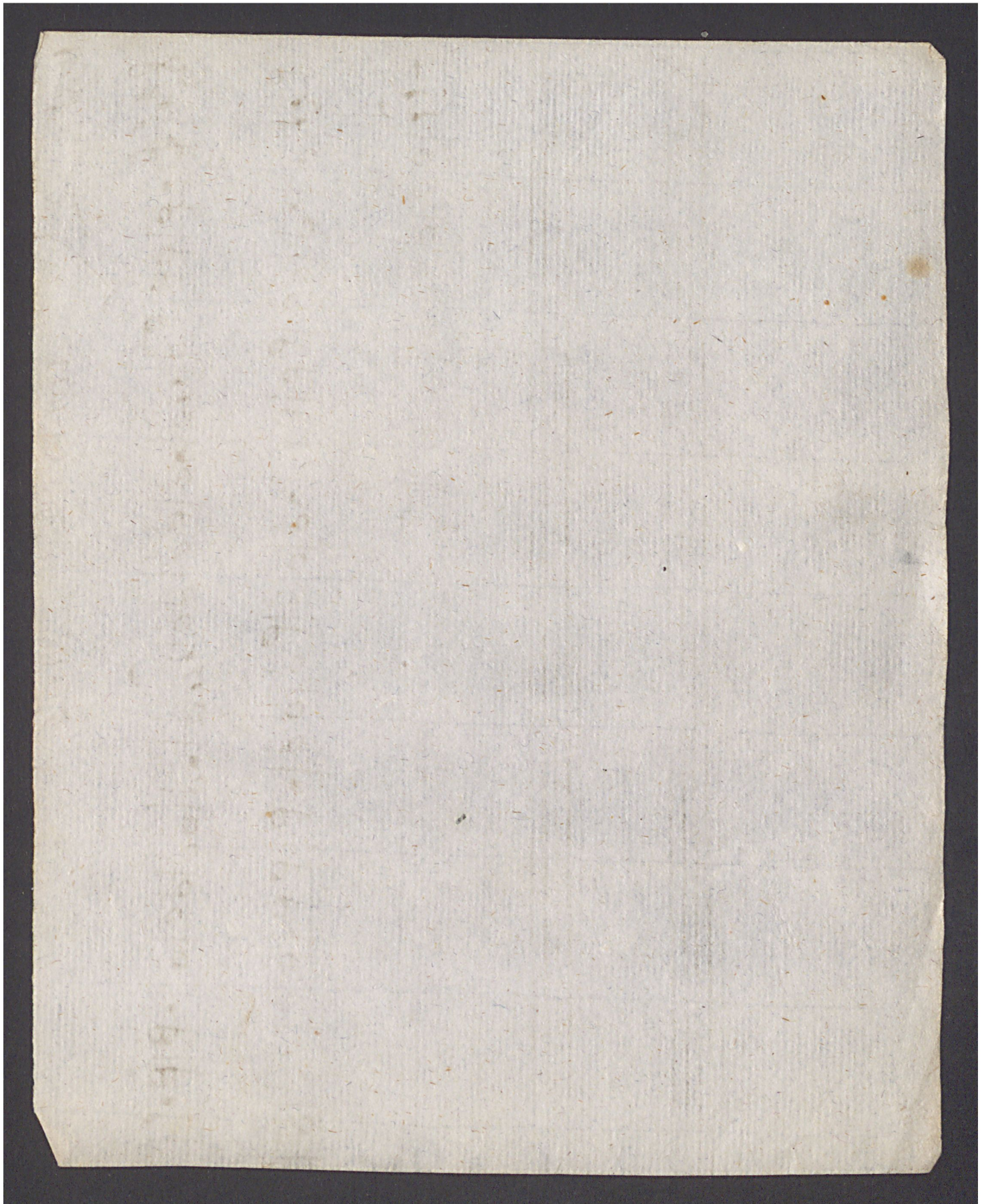
- Top left: "1870"
- Top middle: "1871"
- Top right: "1872"
- Bottom right: "1873"

Miss Langson

Violino 2^{da}

Fr. M. Lind.

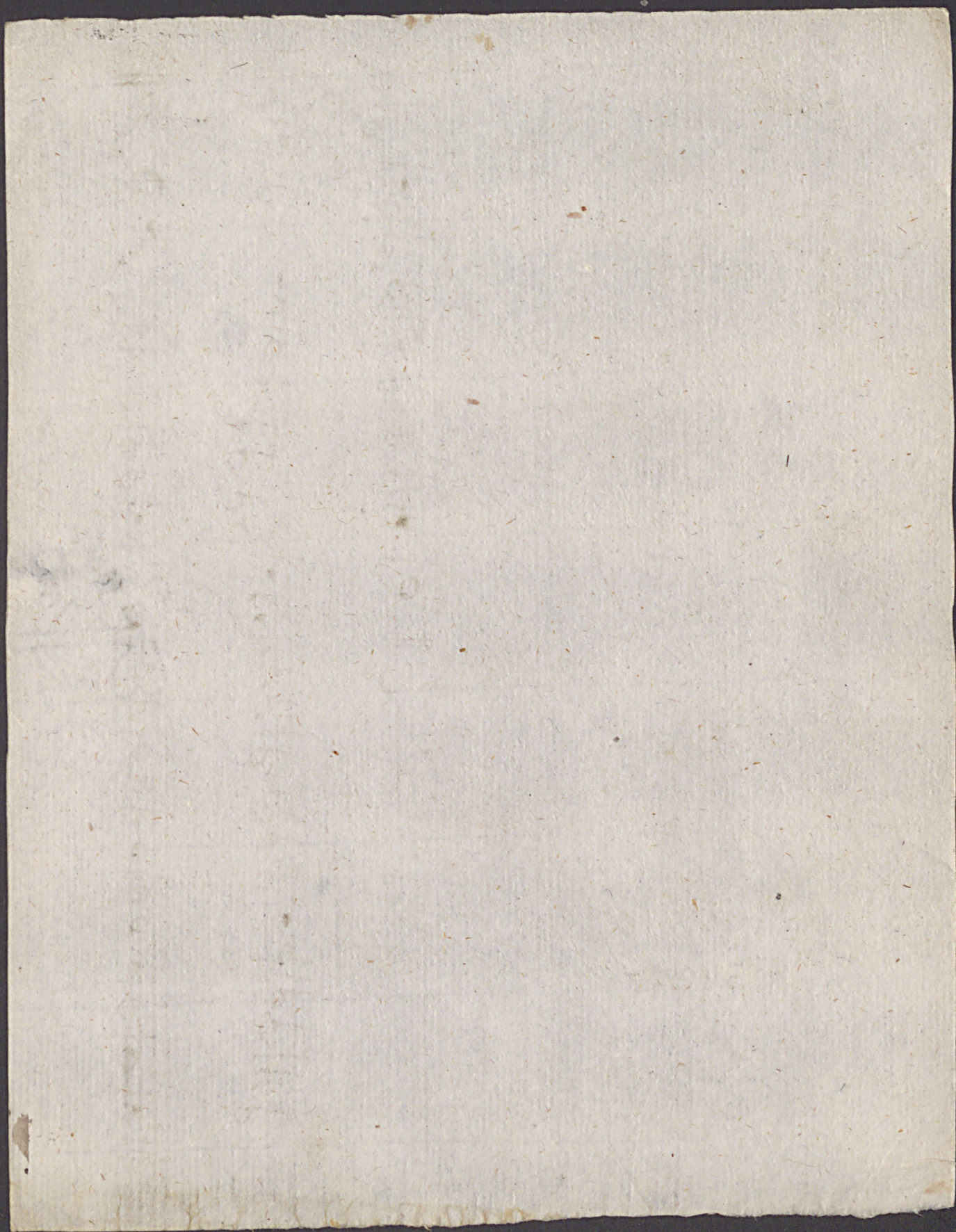
Handwritten musical score for Violino 2da. The score is written on three staves. The first staff begins with a treble clef, a key signature of two sharps (F# and C#), and a common time signature (C). The notation consists of eighth and sixteenth notes, with some rests. The second staff continues the melody with similar rhythmic values. The third staff concludes the piece with a double bar line and a fermata over the final note. The paper shows signs of age, including some staining and a small tear at the top left corner.



Night Song

Viola, Nacht Lied

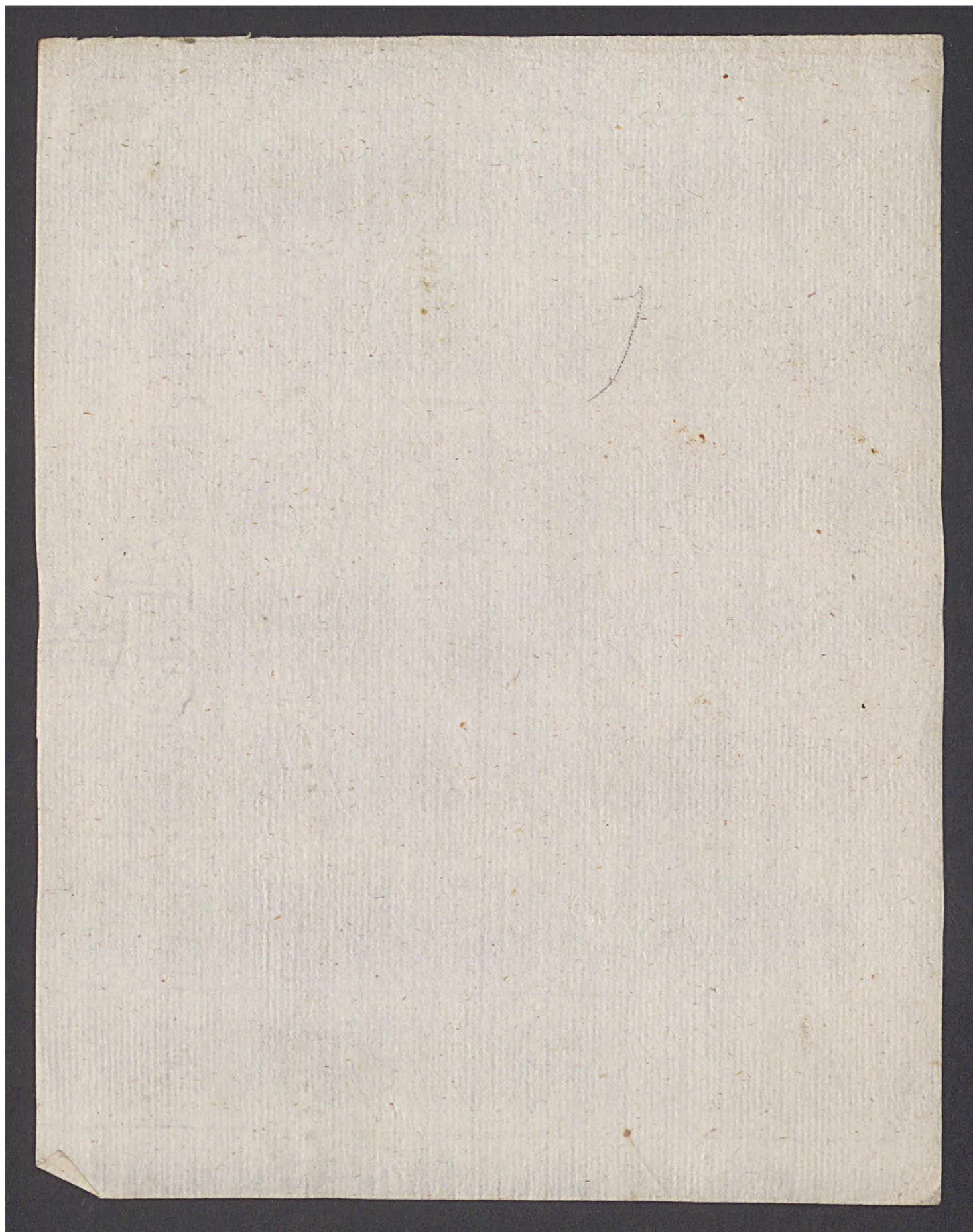
Handwritten musical score for Viola, titled "Nacht Lied". The score is written on three staves. The first staff begins with a treble clef, a key signature of one sharp (F#), and a common time signature (C). The music consists of a series of notes, primarily quarter and eighth notes, with some rests. The second staff continues the melody with similar note values. The third staff concludes the piece with a double bar line and a fermata over the final note. The paper is aged and shows some staining.



Wigl Langsam

Violon. Solo. Ad. lib.

Handwritten musical score for Violon Solo, Ad lib. The score consists of three staves of music. The first staff begins with a treble clef, a key signature of two sharps (F# and C#), and a common time signature. The notation is in a cursive style, featuring various note values and rests. The second and third staves continue the melodic line. The third staff concludes with a double bar line and a 'fin.' marking.

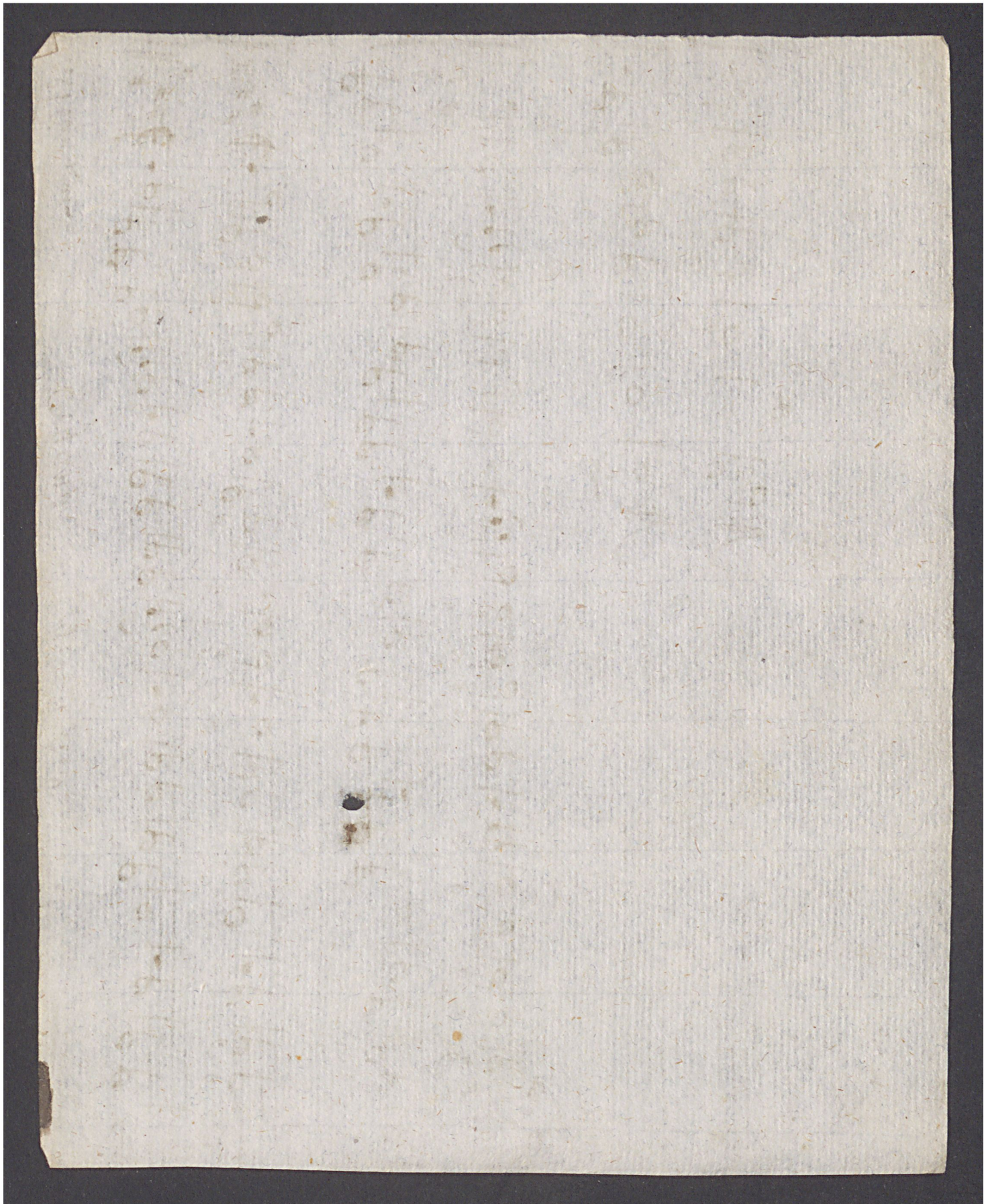


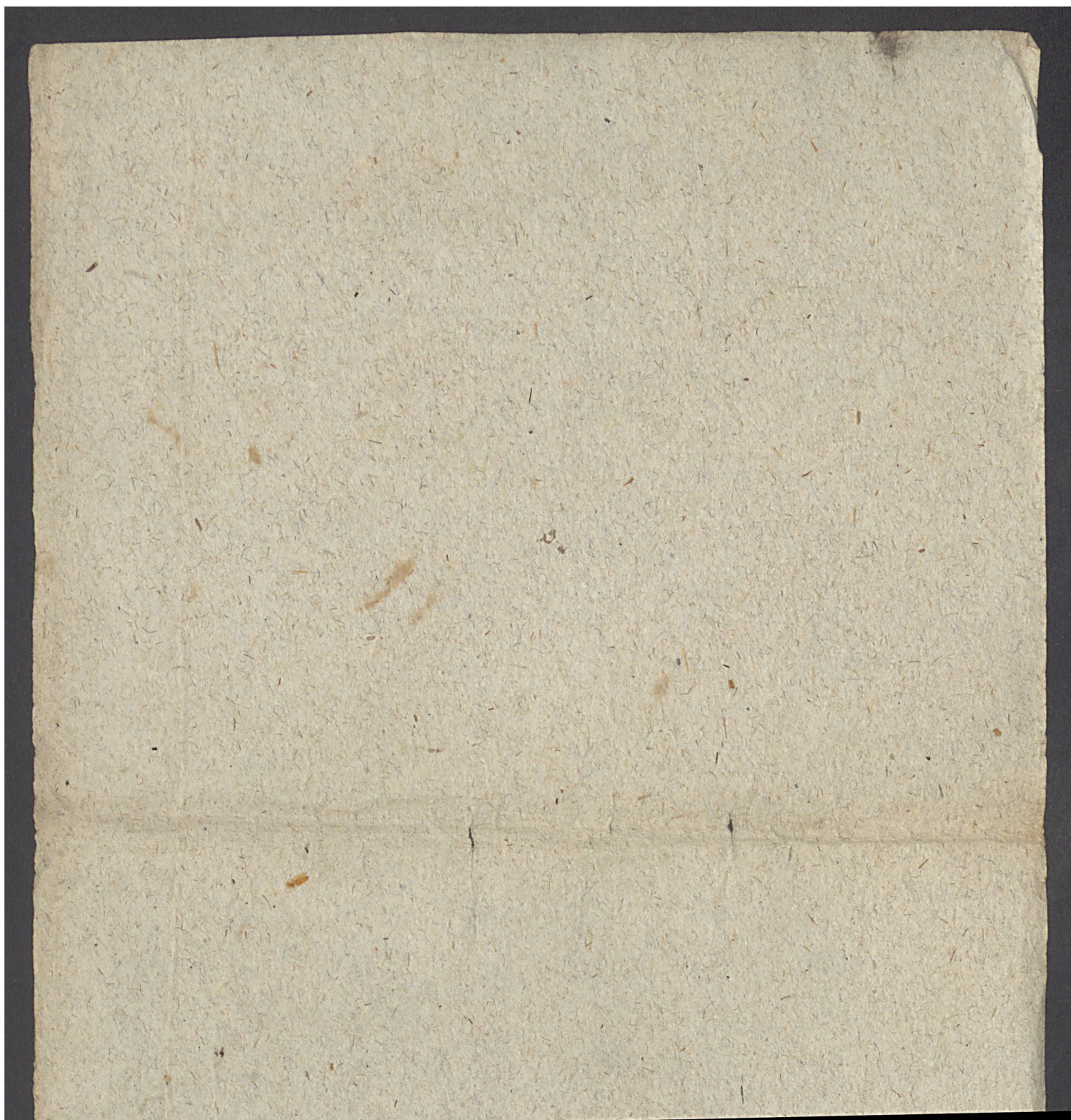
Mist Langsam

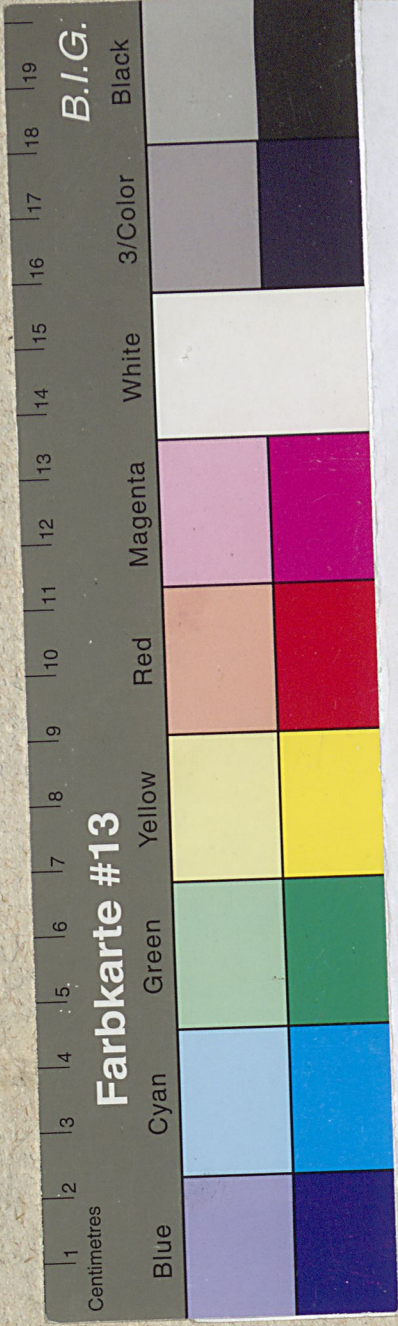
Organo.

Gröblich 2. u. 9.

Handwritten musical score for organ on five staves. The notation includes treble clefs, a key signature of one sharp (F#), and various rhythmic values such as eighth and sixteenth notes. The score is divided into measures by vertical bar lines. There are some ink stains on the paper, particularly on the second staff.







Farbkarte #13

Centimetres

B.I.G.

Black

3/Color

White

Magenta

Red

Yellow

Green

Cyan

Blue

Archiv Zentralbibliothek
der Landeskirche

