

N. XIII.

Aria - Basso Solo.

Ex. 2. Gailand, in. Dim. 2.

Contra-

2 Violino
viola et organo.

ex. 4. Largo.

Galluppi

Schneider
Chor
Vso.

~~H. G. Schubert~~

269

W. A. III.

Am. - 2000

1000

Am. - 2000
S. 1000
W. 1000

1000

1000

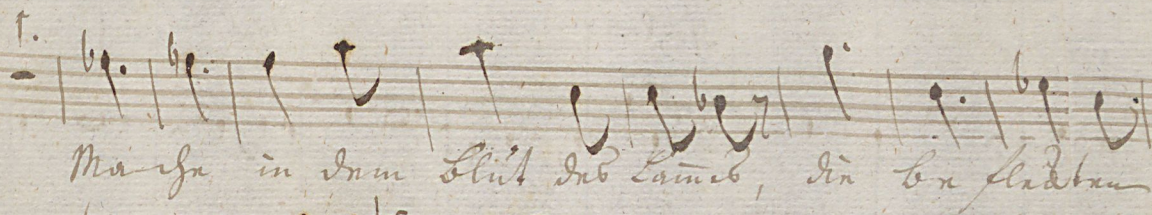
1000
1000
1000

Basso, tria solo.

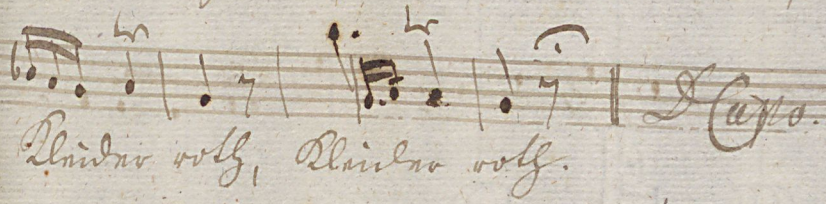
XIII

Largo

Erinnere Hügland meine Dünden, treiben mich zum
 Gauden Stiff; Erinnere Hügland, meine Dünden, meine Dünden treiben
 mich zum Gauden Stiff auf wo soll ich Rettung finden,
 wenn mir Drost der Höl lau Hülff.
 wenn mir Drost der Höl lau Hülff. Erinnere Hügland meine
 Dünden treiben mich zum Gauden Stiff, Erinnere Hügland,
 wie ein Dünden, treiben, treiben mich zum
 Gauden Stiff auf wo soll ich auf wo soll ich,
 auf wo soll ich Drost, Rettung, Ret - tung fin - den.
 wenn mir Drost der Höl lau Hülff auf zur Tafel,
 göttlicher Güte nicht zur Tafel der göttlichen Güte.



Mache in dem Blut des Lammes, die bekehrten



Credo.

Alindro voll, Alindro voll.

Aria Largo. a. Violino.

XIII

The image shows a page of handwritten musical notation for a violin aria. The score is written on 12 staves. The first staff begins with a treble clef, a key signature of one sharp (F#), and a 3/4 time signature. The music is characterized by a slow tempo, indicated by the 'Largo' marking. The notation includes various note values, rests, and dynamic markings. The paper is aged and shows some staining and wear.

104
Allegro

Handwritten musical notation on aged paper, featuring staves with notes and clefs, likely a manuscript page.

Aria Largo. 2. violino.

XIII

The image shows a page of handwritten musical notation for a violin part. The score is written on 13 staves. The first staff begins with a treble clef, a key signature of one flat (B-flat), and a time signature of 3/4. The music is characterized by a slow tempo, indicated by the 'Largo' marking. The notation includes various note values, rests, and dynamic markings such as 'p' (piano) and 'pp' (pianissimo). A fermata is present over a note in the 11th staff. The piece concludes with a double bar line and the instruction 'Fin. Adm. 104.' written in the final staff.

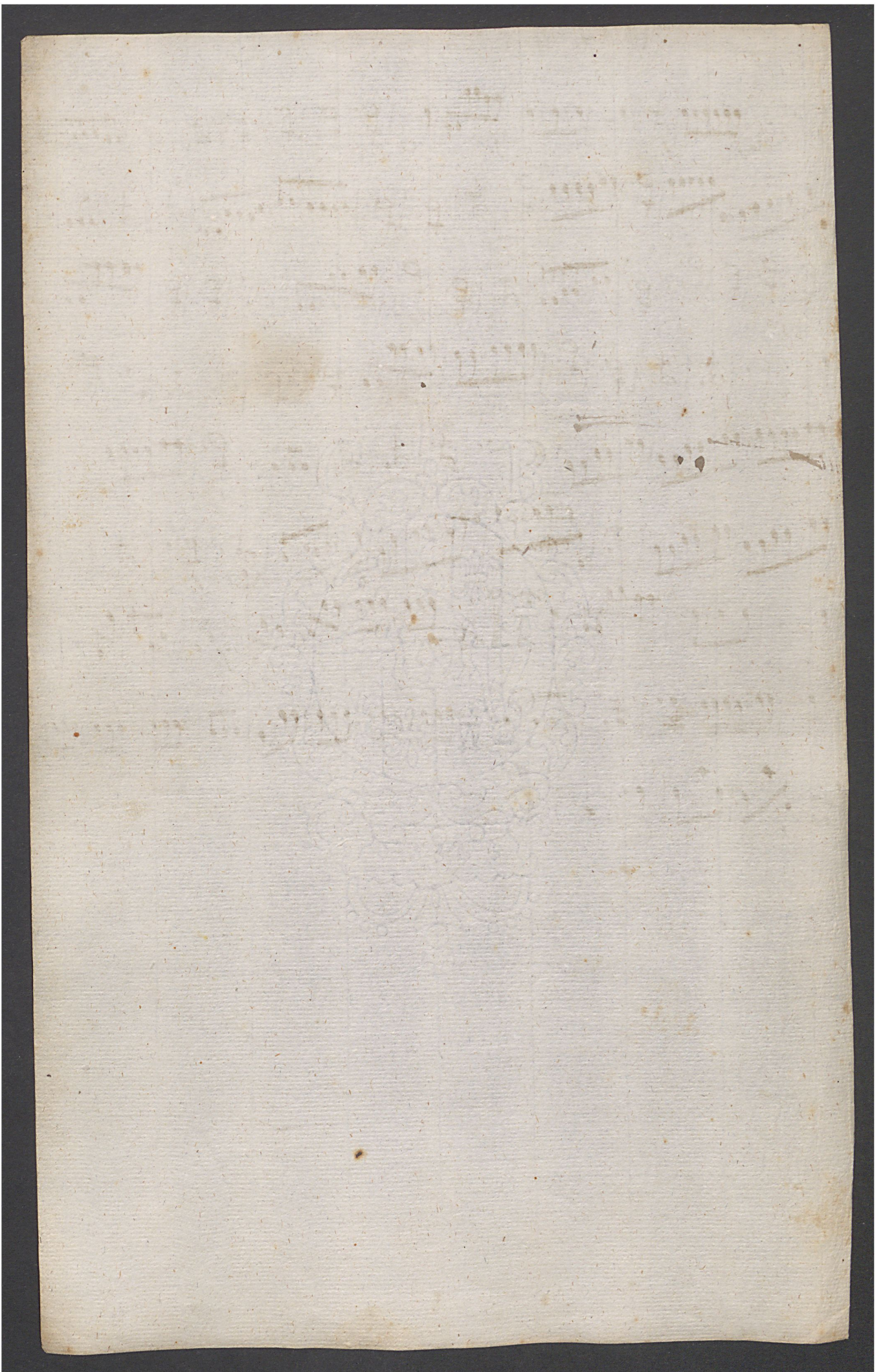
Faint, illegible markings and bleed-through from the reverse side of the page, possibly representing musical notation or text.

Violetta, Aria Solo

XIII

Largo.

Handwritten musical score for Violetta, Aria Solo, page XIII. The score consists of ten staves of music. The first staff begins with a treble clef, a key signature of one flat (B-flat), and a 3/4 time signature. The music is marked 'Largo'. Dynamics include 'p.' (piano) and 'f.' (forte). The score features various rhythmic patterns, including sixteenth and thirty-second notes, and rests. The eighth staff has a 'pian' marking and a 3/8 time signature. The tenth staff ends with a 'Capo 104' instruction.



Aria XIII

Del sig. Galuppi.

Ereuer Högland, minn Simla
3^o Conunion.

a. voc.

Basso Solo.
2. violino
viola cum
Organo.

ex F^o Largo.

~~Alfredenberg~~
~~Alfredenberg~~
~~Alfredenberg~~

Aria, Organo.

Galoppj. XIII

Handwritten musical score for an organ and voice. The score is written on ten staves, with the top two staves of each system containing the organ part and the bottom two containing the vocal part. The music is in a minor key (three flats) and 3/4 time. The lyrics are in German and describe a journey to Jerusalem.

System 1:
 Organ: *p.*
 Voice: *p.*
 Lyrics: *Jerusalem*

System 2:
 Organ: *p.*
 Voice: *p.*
 Lyrics: *heiligt mein Sünden*

System 3:
 Organ: *p.*
 Voice: *p.*
 Lyrics: *schreib mir zum*

System 4:
 Organ: *p.*
 Voice: *p.*
 Lyrics: *Jerusalem*

System 5:
 Organ: *p.*
 Voice: *p.*
 Lyrics: *Jerusalem*

System 6:
 Organ: *p.*
 Voice: *p.*
 Lyrics: *Jerusalem*

System 7:
 Organ: *p.*
 Voice: *p.*
 Lyrics: *Jerusalem*

System 8:
 Organ: *p.*
 Voice: *p.*
 Lyrics: *Jerusalem*

System 9:
 Organ: *p.*
 Voice: *p.*
 Lyrics: *Jerusalem*

System 10:
 Organ: *p.*
 Voice: *p.*
 Lyrics: *Jerusalem*

Handwritten musical notation with lyrics: auf wo voll ist auf wo voll ist der zehnte zehnte fünf den was mir

Handwritten musical notation with lyrics: droff du sollen viel auf zur

Handwritten musical notation with lyrics: fülle göttlich Bild nicht zur fülle auf zur fülle der göttlichen fülle

Handwritten musical notation with lyrics: Ma du in dem Blut der Leinwand die be-standene Leinwand wolle

Handwritten musical notation with lyrics: alle die wolle

Darapo.

Handwritten musical notation on the left edge of the page, including a treble clef and various notes.

Faint handwritten text at the top of the page, possibly a title or header.

Second line of faint handwritten text.

Third line of faint handwritten text.

Fourth line of faint handwritten text.

Fifth line of faint handwritten text.

Sixth line of faint handwritten text.

Seventh line of faint handwritten text.

Eighth line of faint handwritten text.

Ninth line of faint handwritten text.

Tenth line of faint handwritten text.

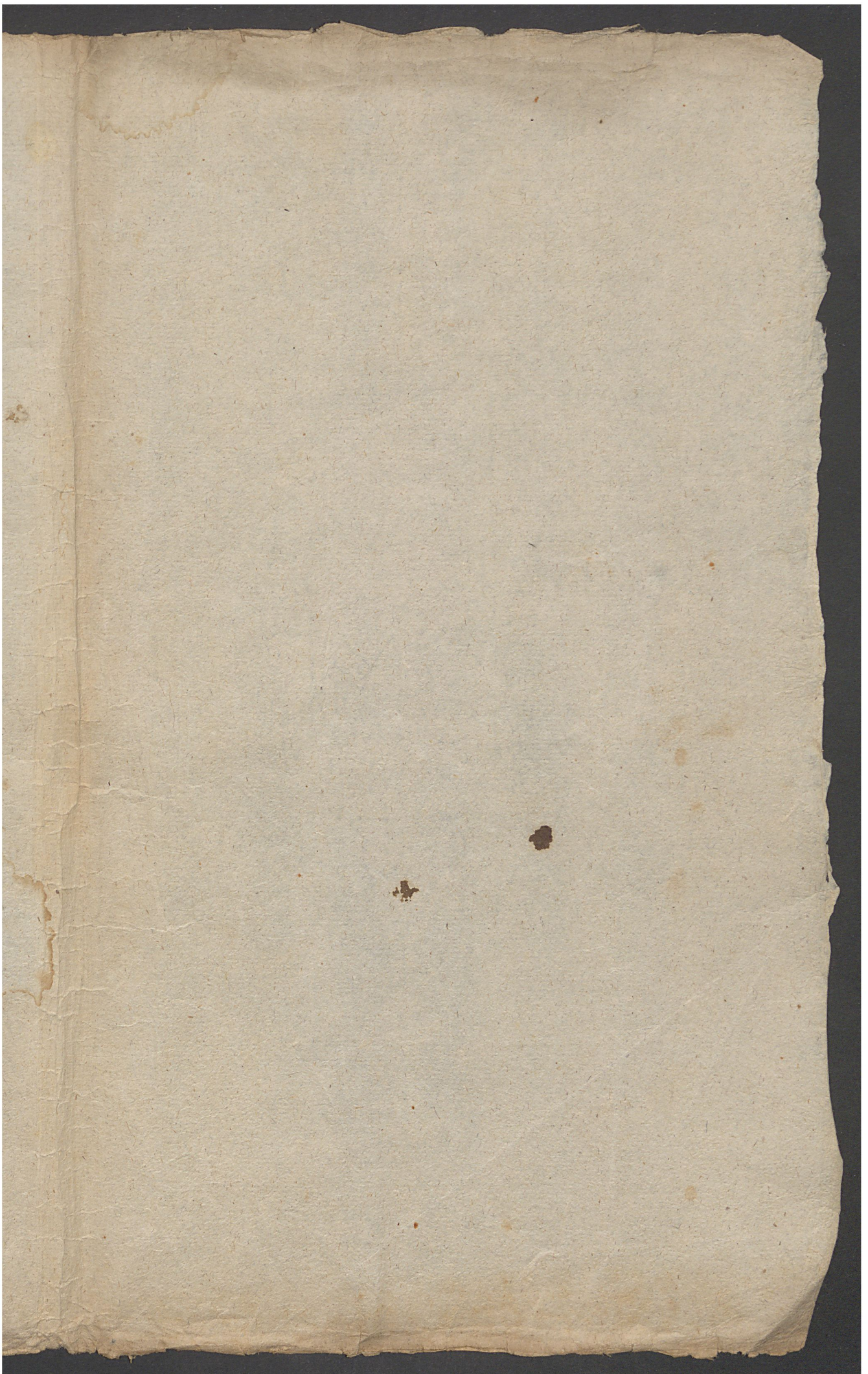
Eleventh line of faint handwritten text.

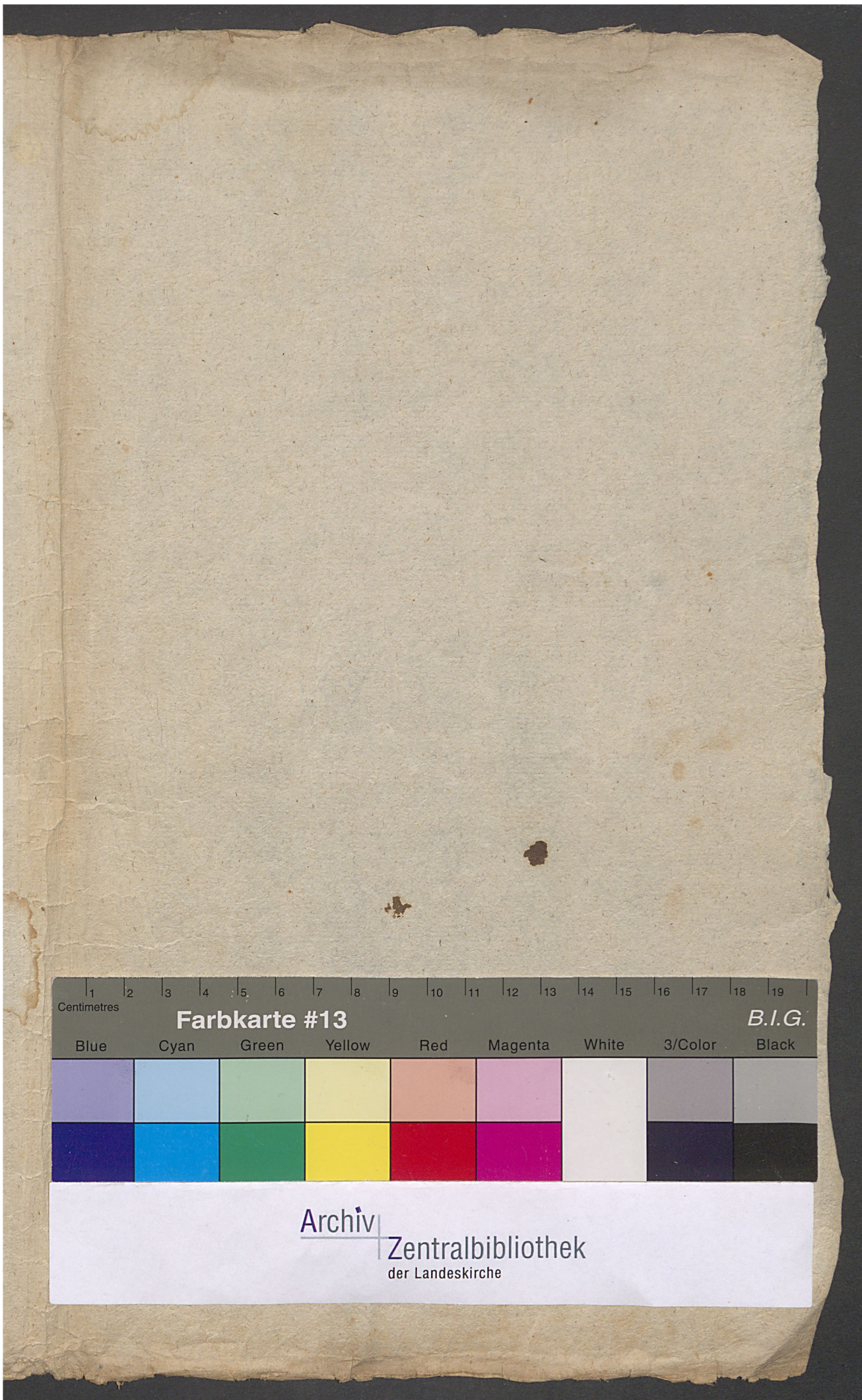
Twelfth line of faint handwritten text.

Thirteenth line of faint handwritten text.

Fourteenth line of faint handwritten text.

Fifteenth line of faint handwritten text.





Centimetres 1 2 3 4 5 6 7 8 9 10 11 12 13 14 15 16 17 18 19

Farbkarte #13 *B.I.G.*

Blue	Cyan	Green	Yellow	Red	Magenta	White	3/Color	Black

Archiv | Zentralbibliothek
der Landeskirche

